



電寶儲水
HOTPOOL STORAGE

代理品牌/BRANDS



HPU/EHU 系列

中央儲水式電熱水器

電寶儲水的HPU/EHU系列按本港安全規格而設計及生產，長年使用均保證舒適及安心。每台HPU/EHU均擁有4重專業保護裝置

1. 恆溫器
2. 超溫斷路器
3. 防真空閥
4. 溫度及壓力排放閥

電寶儲水的HPU系列備有多達50種型號。由喉管尺寸、安裝方式、儲水容量及發熱功率均可按個人所需以作選購。客戶如有特定需求亦可訂造爐款。

1. 安裝方式：垂直或橫向掛牆式、坐地式及天花式。
2. 儲水容量：15公升至1000公升。
3. 發熱功率：2kW單相至72kW三相

HPU/EHU SERIES

UNVENTED CENTRAL HEATER (HONG KONG STANDARD)

HOTPOOL STORAGE HPU/EHU series are specially designed and manufactured to comply with the Hong Kong standard for Unvented Storage Electric Water Heater for multi-point hot water application. Special settings and safety requirements are implemented to ensure trouble free usage for years.

Every unit includes special features such as:

- 1) Thermal Control
- 2) Thermal cut-out
- 3) Anti-vacuum Valve
- 4) Pressure & Temperature Relief Valve

HOTPOOL STORAGE HPU series provides selections of different sizes of inlet and outlet pipes to cater for different applications.

HOTPOOL STORAGE HPU series is suitable to install with cistern or direct main supply of water everywhere since various designs are available. Customers can choose from vertical or horizontal wall mounting, floor standing, or ceiling mounting.

The full range of HPU series consists of over 50 models with different capacity ranging from 15 litres to 1000 litres, and heating element rating ranges from 2kW to 72kW for your selection.

ST/HN 系列

花灑儲水式電熱水器

電寶儲水的ST/HN系列專為只具備冷水喉管的浴室而設計。隨花灑式熱水器所附送的單控混合龍頭，用家便可享受恆久穩定的熱水。

電寶儲水的ST/HN系列備有7種不同型號，儲水容量由8公升至30公升以供選購。

ST/HN SERIES

SINGLE POINT SHOWER UNIT

No Need to Install Hot Water Pipes in your Bathroom!

HOTPOOL STORAGE ST/HN series are specially designed for easy installation particularly for bathroom with cold water piping inlet only. Simple and easy-to-use functions are our main focus when designing and building the ST/HN series. Just turn on the shower mixer and constant flow of non-fluctuating water temperature and unrestricted flow of hot water will be available to you during every shower session.

HOTPOOL STORAGE ST/HN series are an All-In-One package where every unit comes with our original mixing tap, shower set and installation accessories.

The full range of ST/HN series consist of 7 different models, capacity ranging from 8 litres to 30 litres for your selection.



HPU (horizontal)

HPU

EHU

HPU E

HPU EP

HN

ST EP

ST E

渦輪加熱之優點

Advantages of Turbo Heating Device



1. 水箱溫度更平均
2. 熱水量更多
3. 恆溫器之使用壽命更長
4. 減除加熱盲點
5. 出水溫度更穩定

1. Equalize water temperature within the water tank
2. Deliver more hot water compared to traditional storage water heater
3. Longer life-time for thermostat
4. No more heating blind spot
5. Less hot water fluctuation

電寶實業專利研發
Innovated and Patented by
Hotpool Industries Limited

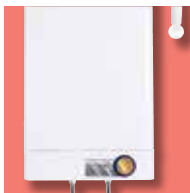
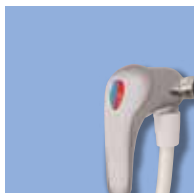
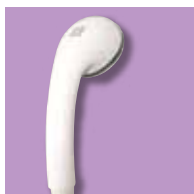


* 渦輪加熱器只適用於指定型號
Turbo Heating apply only to specific models



型號 Model	HPU-3.5*	HPU-6.5**	HPU-10*	HPU-15*	HPU-20*	HPU-25	HPU-30	HPU-40	HPU-50
品種 Type	中央儲水式系列 Unvented Multi-Point Central Storage Type								
容量 Storage Capacity (公升Litres)	15	25	38	55	76	95	115	150	200
尺寸 Size 高H x 闊W x 深D (毫米 mm) (方型 rectangular)	450 x 335 x 306	660 x 335 x 306	660 x 390 x 356	660 x 432 x 432	813 x 432 x 432	/	/	/	/
尺寸 Size 高H x 闊W (毫米mm) (圓型 cylinder)	450 x 315	660 x 315	660 x 362	660 x 432	810 x 432	984 x 432	838 x 508	1048 x 508	1130 x 559
水喉 Inlet Size	Ø ½" & Ø ¾" & 1" & Ø 1½"								
功率 Power Rating (千瓦kW)	2 / 3 / 4 kW		3 / 4 / 6 / 9 kW			3 / 4 / 6 / 9 / 12 / 18 kW			
電壓 Voltage / Phase	220V / 1-Phase, 380V / 3-Phase								
恆溫掣 Thermostat	由35°C 至75°C 可自由調較 35°C-75°C Adjustable								
內膽物料 Inner Tank Material	高級不銹鋼 Special High Guage Stainless Steel								
試壓 / 工作水壓 Test / Working Pressure	2.0 / 1.0 MPa								
外殼 Casing	噴粉焗漆處理優質電解片 E.G. Sheet Epoxy Coating								
淨重 Empty Weight (公斤kg)	9.5	11	15	22	26	30	35	41	50
連水重 Operating Weight (公斤kg)	24.5	36	53	77	102	125	150	191	250
內膽保用期 Inner Tank Warranty	10 年 Years*								
電子零件保用期 Electrical Parts Warranty	1 年 Year								

* EP系列 EP series * E系列 E series



型號 Model	ST-2E	ST-4E/EP HN-18	ST-6.5E/EP HN-23	ST-7E	ST-8E
品種 Type	花灑儲水式系列 Single-point Shower Unit				
容量 Storage Capacity (公升 Litres)	8	18	23	25	30
尺寸 Size 高H x 闊W x 深D (毫米 mm)	435 x 275 x 200	572 x 335 x 245	685 x 335 x 245	535 x 435 x 245	610 x 435 x 245
水喉 Inlet Size	Ø ½"				
功率 Power Rating (千瓦 kW)	1.5 / 2 / 3 kW				
電壓 Voltage / Phase	220V / 1-Phase				
恆溫掣 Thermostat	由35°C 至85°C 可自由調較 35°C-85°C Adjustable				
內膽物料 Inner Tank Material	高級不銹鋼 Special High Guage Stainless Steel				
試壓 / 工作水壓 Test / Working Pressure	0.4 / 0 MPa				
外殼 Casing	噴粉焗漆處理優質電解片 E.G. Sheet Epoxy Coating				
淨重 Empty Weight (公斤 kg)	8	10	11	13	15
連水重 Operating Weight (公斤 kg)	16	28	34	38	45
內膽保用期 Inner Tank Warranty	10 年 Years*				
電子零件保用期 Electrical Parts Warranty	1 年 Year				

* 當一年免費保用期屆滿後，本公司將會為熱水器內膽提供九年的有限制保用服務。此保用服務只適用於熱水器內膽的更換或維修，所有檢查、運送及裝拆費用均須另行收費。其他細則請參考保修細則及條款書。



電寶實業有限公司 Hotpool Industries Limited

香港葵涌葵喜街13-29號 永恆工業大廈16樓7-12室

Flat 7-12,16/F., Wing Hang Ind. Bldg., 13-29 Kwai Hei St., Kwai Chung, H.K. Tel: (852) 3622 3800 Fax: (852) 3622 3820

陳列室 Showroom: 香港旺角上海街665號地下 Ground Floor, 665 Shanghai St., Mongkok, H.K.

本文所載資料，圖片及產品規格只供參考，如有更新改進，恕不另行通知。
Specifications subject to change without prior notice. Some illustrations indicate overseas models and may not be available locally.