

電寶儲水

HOTPOOL STORAGE



電寶實業有限公司
Hotpool Industries Limited

ST-E/EP 電熱水器產品
ST-E/EP Electric Water Heater
安裝及操作使用說明書
Installation and Operation Manual



ST-E

香港葵涌葵喜街13-29號永恒工業大廈16樓7-12室
Flat 7-12, 16/F Wing Hang Ind. Bldg., 13-29 Kwai Hei St, Kwai Chung, HK
Tel: (852) 3622 3800 Fax: (852) 3622 3820

客戶服務熱線：(852) 3622 3833 (852) 2614 6798

HPH0005A32



電寶實業有限公司
Hotpool Industries Limited

7 電寶實業有限公司產品保證條款 Warranties

1. 2年全機保養及10年有限制內胆保養
2 years warranty for electrical parts and 10 years limited inner tank warranty
2. 用戶自購買當日起便可獲得上述保養服務，如在保養期內因產品配件出現問題，本公司將給予更換或維修。
The customer's warranty period start from the purchase date, if there is any problem during the warranty period, we will provide parts replacement or maintenance.
3. 此保證書將不包括如下使用而導致出現的故障：
 - ① 未按本說明書安裝及使用
 - ② 使用不適當或不合格的配件
 - ③ 未被授權下進行安裝或更改配件
 This written guaranty do not include the breakdown which causes by the following :
 - ① Not follow the user manual for installation and usage
 - ② Use the dis-qualified accessories
 - ③ Unauthorized for any installation work or accessories change
4. 如熱水器用於商業行爲，此保證書將自動失效；
The warranty will be voided if the heater is for commercial use;
5. 在維修或更換地區如未有公共汽車服務或需要辦公時間以外工作，本公司會收取額外附加費。
An supplementary charges will be applied where the place or premises could not be accessed by public transportation and or serve on non-office hours.
6. 天災、人爲因素或因非正當使用而導致本產品出現任何問題或導致的任何問題事故，本保證書自動失效。
Before operating this set, please fully understand the prerequisite such as specifications or constraints. We are not responsible and have no liability for any loss, damage or injury for any loss, damage or injury as a results of mis-use.

- 本說明書內容已經是在出廠前最後修訂版，唯本說明書的內容如有更改，恕不另行通知。
- The information in this manual is subject to change without notice.

致客戶：
Dear Customer,

非常感謝閣下選購電寶儲水 ST-E/EP 系列花灑式電熱水器。
Thank you for purchasing the Hotpool Storage electric water heater ST-E/P series.

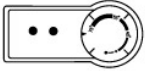
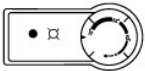


電寶儲水 ST - E/EP 系列採用獨有專利的內置渦輪加熱系統，精確省電，省心，安全，讓您的生活更輕鬆。
Hotpool Storage ST - E/EP series have the Built-in Turbo Heating System, safe and saving energy, your life will become more relaxed.

閣下在安裝及使用前請仔細閱讀本使用說明書。
Before installation and usage, please read this user manual carefully and keep this manual for future reference.

請安排合資格工程人員進行安裝和使用前第一次測試工作程序。
Installation, maintenance work and the first time operation may only be carried out by a qualified installer.

如需將本產品交予另一方接管，請必須將本說明書一併交給對方。
Keep this manual in a safe place, and give it to the new owner.

6 常見問題 Troubleshooting


狀態 State	狀況 Condition	原因 Cause
	<ul style="list-style-type: none"> ● 指示燈不亮 ● No indicator 	電源被切斷 Power is cut off
	<ul style="list-style-type: none"> ● 正在加熱指示燈長亮或長期閃爍，沒熱水供應 ● Heating indicator lights or glitters for long time, but no hot water provided 	發熱芯損壞 Heating element is damaged
	<ul style="list-style-type: none"> ● 正在加熱指示燈閃爍過久，且出水溫度過熱或花灑頭噴出蒸氣 ● Heating indicator glitters for long time, and the water is too hot or steam come out from the shower 	恆溫器失靈或損壞 Thermostat failure
	<ul style="list-style-type: none"> ● 加熱完成指示燈長亮，但沒熱水供應 ● Ready indicator lights, but no hot water provided 	超溫保護器開路 Overheated Protection system cut off the power

目 錄

Table of contents

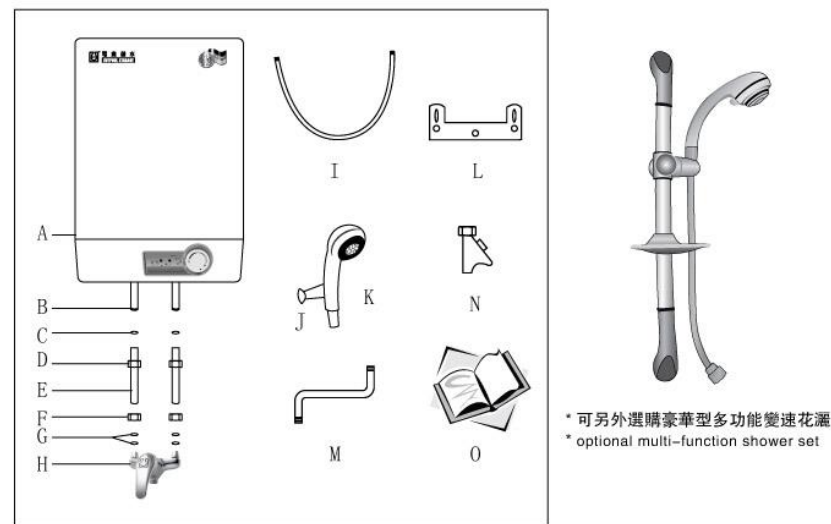
1. 產品及隨機組件 Product and Accessories	3
1.1 主機及配件說明 Main Unit and Accessories Instructions	
1.2 控制器 Controller	
2. 安裝說明 Installation Guides	5
2.1 安裝說明 Installation Explanation	
2.2 安裝注意事項 Important Notes for Installation	
3. 主要功能介紹 Major functions Introduction	9
4. 操作及使用指南 Operating Guides	10
4.1 使用指南 Operating Guides	
4.2 使用注意事項 Operation Precaution	
5. 技術參數 Technical Specification	12
6. 常見問題 Troubleshooting	13
7. 電寶實業有限公司產品保證條款 Warranties	14

5 技術參數 Technical Specification

Products Technical Parameters 技術參數		Unit 單位	Single - Point Shower Unit 花灑儲水式系列			
			ST- 2E	ST-4E	ST- 6.5E	ST- 8E
Storage Capacity	容量	Litres 公升	10	18	23	30
Power Capacity	功率	kW	1.5 / 2 / 3			
Electrical Connection (voltage)	電壓		220V / 1~PE (單相)			
Dimensions (H x W x D)	機身尺寸 (高 / 闊 / 深)	mm	534 x 290 x 203	575 x 338 x 242	682 x 361 x 267	639 x 480 x 297
Power Control	操作		Thermostat variable adjustment 恆溫掣 調控旋鈕			
Hot Water Temperature (Min./Max.)	恆溫範圍 (最低-最高)	°C	35 - 85			
Cold Water, Hot Water Connection	水喉規格		φ 1/2"			
Test Pressure	測試水壓	MPa	0.4			
Working Pressure	工作壓力	MPa	0			
Max. Water Pressure	最大供水水壓	MPa	0.7 (should not be greater than 建議不超過)			
Empty Weight	淨重	kg	8	10	11	15
Operating Weight	連水重	kg	16	28	34	45
IP Rating	防水級別		IP 25			
Electrical Parts Warranty (*)	電子零件保養		2 Years / 年			
Inner Tank Limited Warranty (**)	內膽保養		10 Years / 年			
Inner Tank Material	內膽物料		Speical High Guage Stainless Steel 高級不銹鋼			
Casing	外殼		E.G Sheet Epoxy Coating 噴粉焗漆處理優質電解片			
Mandatory Energy Efficiency Labelling	強制性能源效益標籤		Grade 1 / 級	Grade 1 / 級	Grade 1 / 級	Grade 1 / 級

1 產品及隨機組件 Product and Accessories

1.1 主機及配件說明 Main Unit and Accessories Instructions



* 可另外選購豪華型多功能變速花灑
* optional multi-function shower set

No.	名稱 Name	數量 Quantity	備註 Remark
A	儲水箱 Water Tank	1	主機 Main Unit
B	喉管接駁位 Pipe Connector	2	
C	膠墊 Plastic Ring	2	在配件盒內 In Accessories Packing
D	固定螺母 Insulation socket	2	在配件盒內 In Accessories Packing
E	接駁喉管 Connection pipe	2	在配件盒內 In Accessories Packing
F	固定螺母 Insulation socket	2	在配件盒內 In Accessories Packing
G	防漏膠墊及膠圈 Washer and O-ring	2	在配件盒內 In Accessories Packing
H	單控式混合水制 Mixer tap	1	在配件盒內 In Accessories Packing
I	花灑頭接駁軟管 Connecting hose	1	在配件盒內 In Accessories Packing
J	花灑頭固定座 Shower Head Stand	1	在配件盒內 In Accessories Packing
K	花灑頭 Shower Head	1	在配件盒內 In Accessories Packing
L	固定掛碼 Wall Mounting Bracket	1	在配件盒內 In Accessories Packing
M	S型出水管 S-shape Spout	1	選購件 optional
N	兩用出水口 Dual Outlet	1	選購件 optional
O	說明書 Manual	1	在配件盒內 In Accessories Packing

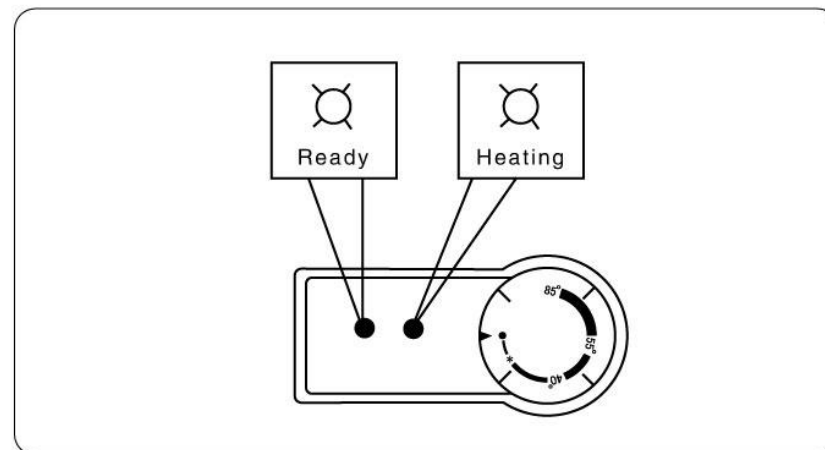
3. 經常定期檢查熱水器的供電電源綫，查看電源綫是否損壞或過熱，如發生，請立即關掉電源，並通知代理商檢查，且需由授權人士更換；
Periodic inspection for water heater's power supply, check whether there is any damage or overheating on the cable. If found, please switch off the power supply immediately, and informs the agent for inspection, and it must be checked by authorized professional;
4. 不可用電源延伸座或與其他家電設備共同連接使用；
Do not connect the power supply through extension cable or use the same supply with other electrical appliances;
5. 如果熱水器發生故障，切勿自行修理或更換零件，應聯絡以下公司：
 - ① 電寶實業有限公司（祇適應於香港境內）
 - ② 授權維修中心
 - ③ 熱水器購買時之分銷商
 If the water heater breaks down, do not repair or replace any components by yourself please contact us through:
 - ① Hotpool Industries Ltd. (For Hong Kong area)
 - ② Hotpool Authorization service centre
 - ③ Hotpool Authorized Dealer
6. 如果需要長時間停用時，建議把電源斷開（停止供電），恢復使用電熱水器時請先進行檢查，打開熱水制（混合水制右邊帶紅點一端），確保爐內有水後才可通電，恢復使用；
If the water heater will be idled for a long time, please switch off the power supply. Check it when you need to use it again, turn on the mixer tap to the hot water side (red dot) to make sure the water tank is full and switch on the power;
7. 本熱水器祇可使用隨機之原裝配件，不可擅自更改；
Please incorporate with original fittings and do not change with any other fitting;
8. 不可使用附有按摩功能的花灑頭於 ST – E~~SEP~~ 系列花灑式熱水器上；
Do not use any unauthorized massage shower head with Hotpool ST – E~~SEP~~ series;
9. 在停水或制水期間，切勿使用或啟動本電熱水器；
If there is no water supply, do not use the water heater;
10. 在本電熱水器安裝位置的地臺，應備有適當的地臺去水設備；
The location for the installation of this water heater should have adequate floor drainage;

警示：此熱水器之出水口祇可做排水及排氣用，必須使用原廠提供的花灑配件，不能接駁任何水制阻塞出水，否則後果自負。

Caution: This water heater outlet is designed to drain out excess water. The shower accessories must be provided by the manufacturer, it cannot connect with any other water system which will block water outlet.

1.2 控制器 Controller

機械式顯示面板說明



- (1) 加熱完成指示燈（黃色）：指示燈長亮，代表加熱完成
Ready indicator (yellow): indicator lights when the water is heated up
- (2) 正在加熱指示燈（紅色）：指示燈閃爍，代表正在加熱
Heating indicator (red): indicator glitters when the water is heating
- (3) 恆溫制旋鈕方向指示：a、右旋增加水溫，b、左旋降低水溫
Thermostat: a) turn right to increase the water temperature b) turn left to decrease the water temperature

4 操作及使用指南 Operating Guides

4.1 使用指南 Operating Guides

1. 確定熱水器安裝在正常狀態和正確位置
Make sure the water heater correctly installed
2. 開啓混合水制右邊熱水制（帶紅點一端），讓冷水和氣泡從花灑頭排出約1分鐘，然後關掉水制。（此程序祇適用於第一次安裝、維修後熱水器的試用或當停水後的第一次使用前）
Turn on the mixer tap to the right side (with red dot) and allows cold water or air bubble flow out for approximately 1 minute, then turn off the mixer tap (This program only suitable for the first time installation, after maintenance or first time use after discontinue of water supply)
3. 開啓電源，將水加熱，此時正在加熱指示燈(紅色)會明亮
Turn on the power, then the system will immediately start heating and the heating indicator (red) will light and flash
4. 當水溫達到預校溫度時，正在加熱指示燈(紅色)會熄滅，加熱完成指示燈(黃色)會明亮
When the water temperature reaches the pre-set temperature, the system automatically turnoff power supply and stops heating, the heating indicator (red) will go out and ready indicator (yellow) will light
5. 使用熱水，首先開啓混合水制左邊冷水制（帶藍點一端），然後慢慢開啓右邊熱水制（帶紅點一端），調校至適合水溫淋浴。
When using hot water, first turn to the left side of the mixer tap (blue spot), then turn to right side for the hot water (red dot), adjust to water temperature suitable for shower.

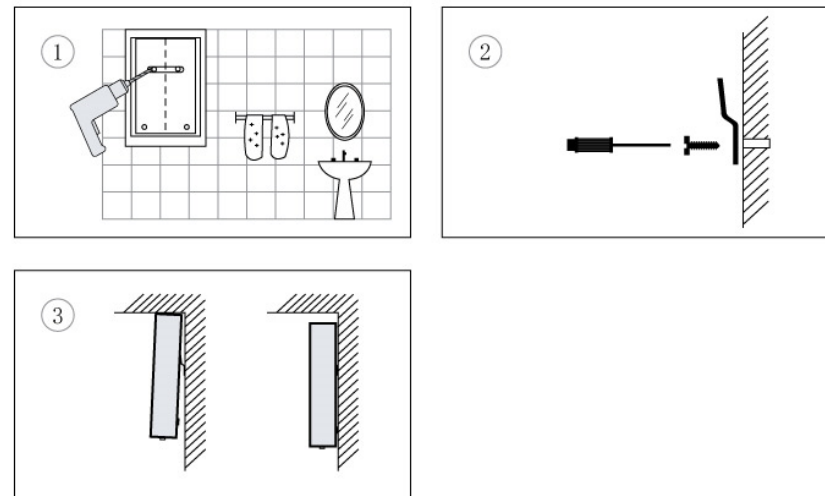
4.2 使用注意事項 Operation Precaution

1. 在加熱過程中，如花灑有少量滴水，是正常排氣現象，毋需大力關冷或熱水制，加熱時，花灑頭是用於排氣，所以在任何時候不得擅自更改花灑喉、花灑頭和混合水制，確保使用安全；
During the heating process, water drips from the shower head is to release the expanded water from the tank. This is absolutely normal. Do not change or alter any of the original parts and fittings;
2. 不可把雜物放在熱水器上；
Do not place anything on the water heater;

2 安裝說明 Installation Guides

2.1 安裝說明 Installation Explanation

固定支架安裝圖 Installation Diagram



圖示安裝說明 Diagram show

- ① 選定放置熱水器的位置，必須使用穩固的混凝土，或者實心磚牆，或者同等功能的建築物，且依照定位指示打好固定掛碼的螺絲孔；
Place the water heater's on stable concretes, or solid brick wall, or same level function building. Mark out the fixing holes for mounting bracket.
- ② 用適當的螺絲固定好固定掛碼；
Use suitable screw to fix the bracket.
- ③ 將熱水器垂直掛在固定掛碼上，傾斜度不能大於5度
Install the water heater vertically as shown on illustration, the gradient cannot be greater than 5 degrees.

3 主要功能介紹 Major function introductions

- 獨有專利設計-內置渦輪加熱系統
Patented design – Built-in Turbo Heating System
- 出水溫度穩定
Stable Water temperature
- 水壓不穩仍可出水流暢
Suitable for unstable water pressure
- 安全防超溫保護
Safety Overheated Protection
- 優質保溫層，保溫能力特強
High density insulation layer keeps the heat loss to the minimal
- 符合最新國際電工協會IEC-60335-1, IEC-60335-21安全標準
Complied to the IEC-60335-1, IEC-60335-21 standard

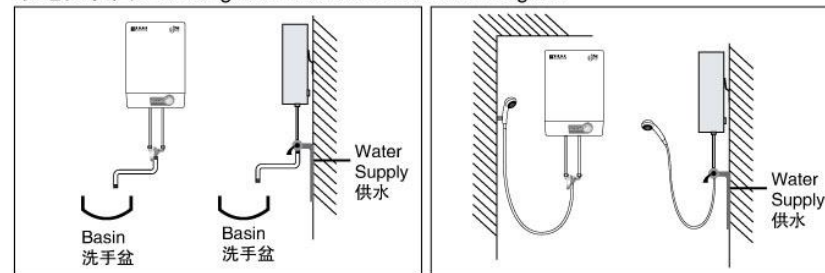
電寶儲水ST – E/EP系列電熱水器擁有獨有專利設計-內置渦輪加熱系統，大大減少加熱盲點，熱量能夠均勻循環，熱水量比一般熱水器更多，效果更佳。Hotpool Storage ST – E/EP series electric water heater has patented design – built-in turbo heating system, highly reduced the heating blindspot, the heat circulation is more even and the heat storage capacity is to maximum.

而且，在來水水壓不穩定的情況下，仍能提出穩定而流暢的熱水，這樣的淋浴才可說是沐浴的享受。
Furthermore, it can provide constant hot water under unstable water pressure situation.

為了保障用家安全，ST – E/EP系列內置超溫保護裝置，當水溫超過一定溫度，便會自動切斷電源。
For your safety, ST – E/EP series are installed a overheated protection system. When the water temperature is over the limit, the system will cut off the power automatically.

另有優質保溫層，減少熱量流失，節省能源。
In addition, high density insulation layer keeps the heat loss to the minimal, save the energy.

水電安裝圖 Plumbing and Electrical Installation Diagram



電源線接線圖 Wiring Diagram



圖示安裝說明 Diagram show

1. 將混合水制固定在穩固牆上的適當位置，並接駁至自來水喉；
Secure the mixer tap on the stable wall and connect to supply pipe;
2. 將混合水制與接駁喉管連接好；
Connect the mixer tap with the connection pipe;
3. 將接駁喉管與熱水器的儲水箱連接好；
Connect the connection pipe and water heater;
4. 將花灑頭固定座固定在穩固牆上的適當位置，然後用花灑頭接駁軟管將花灑頭和混合水制連接好，如果用戶選用S型出水管，則將S型出水管與混合水制連接好即可；
Fix the shower head stand to a appropriate position on the stable wall, and then connect the shower head connecting hose with mixer tap, if the user selects the S shape spout, connects it with the S shape spout and the mixer tap;
5. 將電源開關制安裝在浴室外穩固牆上的適當位置，然後用標準電線將電源開關制與熱水器的電源接線座上相應的接線端連接好即可
Install the power switch to appropriate position on the stable wall outside the bathroom, then the corresponding wiring end connect to cable;
6. 電線安裝需依照使用發熱線的功率和根據當地電力法例，除載流量要滿足熱水器的額定功率，並預留有安全容量。
Electrical supply installations must according to the power rating of heating element and the local electric power regulation. The current-carrying capacity must satisfy the water heater's rated power, and reserves the security capacity.

5. 在使用本電熱爐時，必須注意來水水壓不能超越0.7MPa，和水流量必須少於每分鐘8公升，否則，可能會損壞電熱水爐結構。

When using the electric water heater, the water pressure should not be greater than 0.7 MPa, and the flow rate should not be greater than 8 litres per minute. Otherwise inner tank of the water heater will be damaged.

6. 避免由熱斷路器的誤會重設而生危險，器具不能通過外部開關裝置供電，例如計時器或者連接到由通用部件定時進行通、斷的電路。

In order to avoid a hazard due to inadvertent resetting of the thermal cut-out, this appliance must not be supplied through an external switching device, such as a timer, or connected to a circuit that is regularly switched on and off by the utility.

7. 此熱水器的特殊設計是以花灑頭用作排氣管道。在加熱過程中花灑頭會有少量用水滴出，純屬正常排氣現象。因此，請勿以加裝閘制或摺曲花灑喉等方法阻塞花灑頭排氣和排水。

The shower hose and the shower head are designed as a vent for the water heater. During the heating process, water drops from the shower head is a normal phenomenon. Therefore, please do not install any valve on or bend the shower hose.

警告:

本電器品必須接駁良好地線。若不按照製造商說明書指示安裝，或使用不當而引起一切損失，本公司或製造商均不需負任何責任。

WARNING : THIS APPLIANCE MUST BE EARTHED.

Manufacturer or agent shall not be held responsible for damages resulted from incorrect installation or misuse of heater.

2.2 安裝注意事項 Important Notes for Installation

1. 安裝熱水器之最基本條件如下:

- A) 經批准及安全之供電系統
 - B) 經批准及穩定之供水系統
 - C) 穩定之混凝土或實心磚牆或同等性能建築物
- Basic condition for water heater installation:
- A) Regulations of local electricity authority
 - B) Regulations of the local water authority
 - C) Stable concretes solid brick wall or the same level performance building

2. 安裝熱水器的安全預防措施及操守如下:

- A) 此熱水器電源需接駁於獨立配電箱上，且安裝方法根據當地電器標準及條例執行;
- B) 根據使用電工條例及當地法規，需接駁最少一款安全斷路制如下:
 - i) 適合之自動斷路制
 - ii) 適合之漏電斷路制
- C) 此熱水器安裝必須由授權專業技師安裝及維修;
- D) 此熱水器必須安裝隨機箱附帶的原裝水喉及花灑配件，不得隨意更改;
- E) 此說明書上的熱水器安裝示意圖祇供參考，正確安裝位置及尺碼請與授權專業技師聯絡;
- F) 安裝熱水器的位置，必需備有地臺去水設備或裝置

Notes for installation of water heater as follows:

- A) Electrical wiring must directly connect to the individual main supply. Observe all water and electricity regulation;
- B) According to the local standard and regulations, it is required to connect at least one of the following electrical system:
 - i) Suitable MCB system
 - ii) Suitable RCCB system
- C) The installation (water & electricity) and commissioning must be only carried out by a qualified technician
- D) The water heater must install the original connecting hose and the shower head accessories
- E) The installation diagram inside this instruction booklet is for reference only. For the correct installation position and measurement, please contact with the authorized professional
- F) The position for the installation must provide adequate floor drainage

3. 電力開關需使用符合國際電工協會(IEC)標準的雙極電源開關制，並且該制必須安裝於浴室之外;

A switch intended to disconnect the water heater from the supply, and it should disconnect all poles and should have a contact separation of at least 3 mm.
(Complied with latest IEC/BSEN standard)

4. 熱水器的安裝必須安全穩固並且確保電源線接駁正確無誤;

Make sure the installation of the water heater is absolutely correct and stable;